



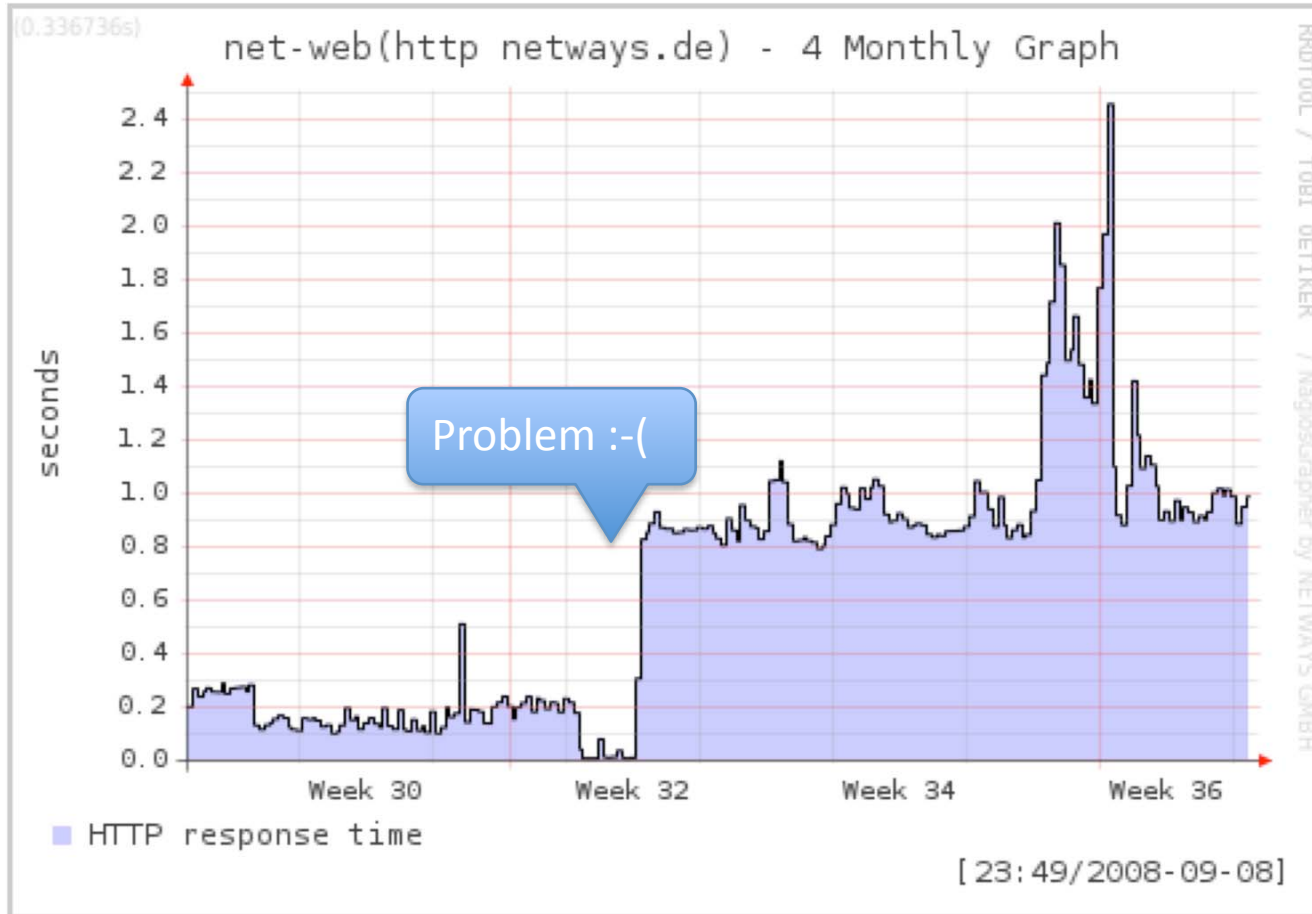
NETWAYS   
**GRAPHER**



**Do we really need  
another graphing tool?**



**We think yes,**  
and here is why.



**Graphs just don't look nice**  
and often display problems (just kidding)

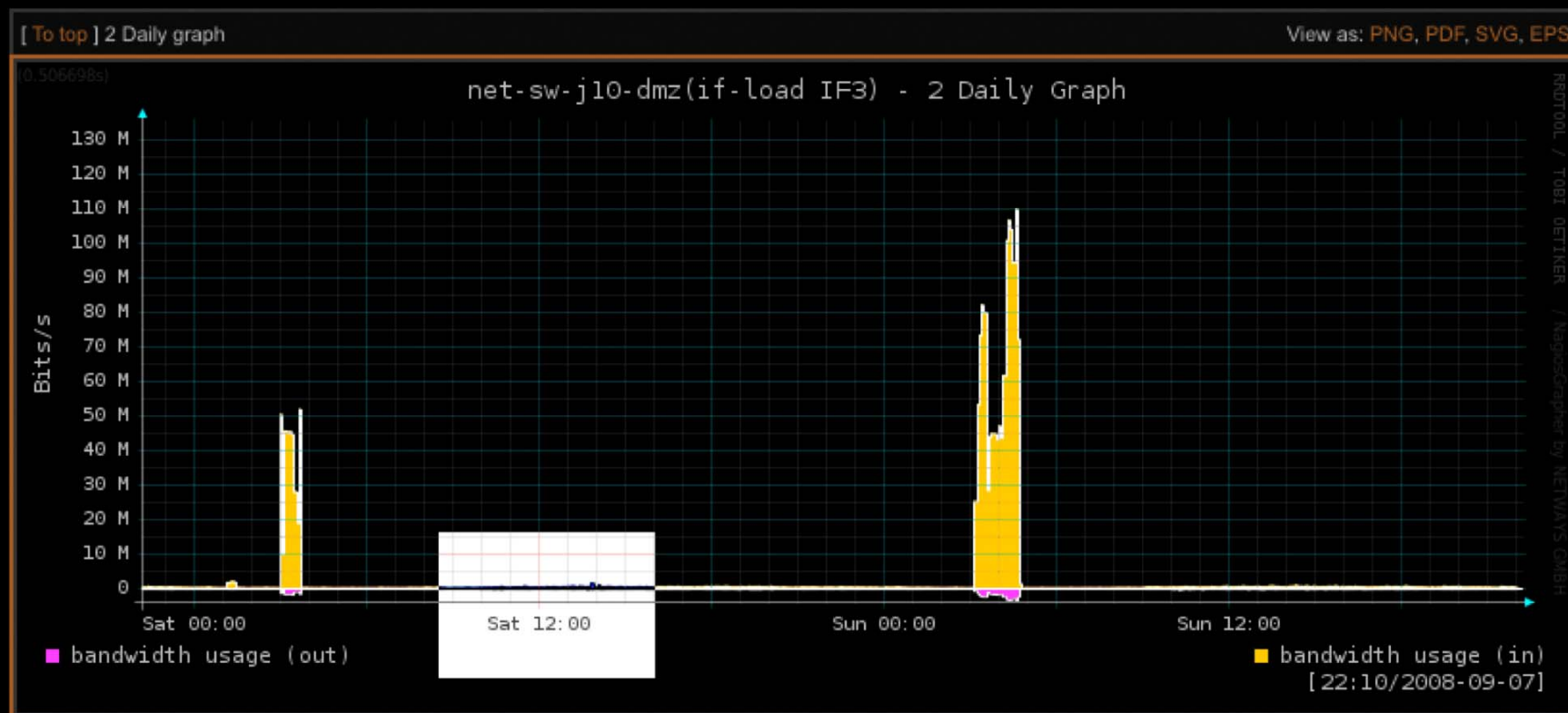


**End users can't**  
configure anything



**Very  
limited  
data  
input  
options**

# Can't get actual figures



Manager: „Can you get me the bandwidth from Saturday around 12?“



# You need a crystal ball

to figure out which charts you might need in the future

00e4e94ceb76755aad6e7c63d4f6cf6d.rrd 7e23a21394c69a3201b08f039a4c2855.rrd e26d0d15662aec8b25dde34ce547d6e.rrd  
02d63875c1d1520e47e0079b5f45299.rrd 7f15548c84293f31154e1ab3852d833b.rrd e31976999c88c7c0f030282233538ac3.rrd  
04ede9c4b9fed0bdba78977a0c3f9000.rrd 7f2c485900f18e6f9bc6e751dcca2ee.rrd e6f8981c300ce4557659025ddee8644c.rrd  
052b17d01633d7ce509b9cf6ca90a028.rrd 825a62bdd35cae954ea743e531b5279.rrd e85e0634e0c83fe87da2cd2a4d4ef74c.rrd  
08b7b82013342a607e19187cf6a9f8f8.rrd 8519289e9f41f52505df7e2f4939ea94.rrd f7c6169e0db7d57ddac9fe08453169f6.rrd  
0e69b6bcc6d1bfac143a55bd581ce4d8.rrd 8db5b4cf571c9bc42ab8e17fd56bc60d.rrd fb6d0779ba6a6eb5b1d22fd1924c9210.rrd  
0fc902627f4d6d8bd6c4fa9f54b8cd33.rrd 914e847f0422e151f3f5bbff141f1e93.rrd 1b398fa87e052ccb34216b37c76762f3.rrd  
1001fa28f1e1d9f0aa57e5e5f982418d.rrd 915d66322c67015603e05773301b730.rrd 20a8a693d469a3d0bdfa6f21cd2ef16a.rrd  
1290e37f0f04b446b9800149c54095c2.rrd 991dfde58d3713def7be3fe2965942e8.rrd 23373445e9e18d493435cb66ecea49d.rrd  
14bb2716a6f16ddd1f70df746dc5305a.rrd 9d1f5f9aca3fe223f0ad85ca0efb933d.rrd 254795ab008d1c4710b5547e161086b.rrd  
1b398fa87e052ccb34216b37c76762f3.rrd a0716886e4262710a6c495163ff07b1a.rrd 26bfdd429ba27f3de59a8ca6aa8bfd13.rrd  
20a8a693d469a3d0bdfa6f21cd2ef16a.rrd a141937e8d6b9d1179803371330c8ffd.rrd 2c7d5043a84c0fba950b04d4fb6621b4.rrd  
2373445e9e18d493435cb66ecea49d.rrd a40dd23b62446e80185e02d09c7b18c.rrd 35b631d5494b828675c2c188a20b4a.rrd  
25495ab008d1c4710b5547e161086b.rrd ab1dc56e779bd11d17133b4225.rrd 397126166433d352137210e06a4d991.rrd  
26bfdd429ba27f3de59a8ca6aa8bfd13.rrd ad3ee5c70b343c3edfb805bf919e97a0.rrd 3c8759b9f297e95bbdc2534244604.rrd  
2c7d5043a84c0fba950b04d4fb6621b4.rrd ad3ee5c70b343c3edfb805bf919e97a0.rrd 3b6a659cb86b123f27aaa2cb021aab88.rrd  
35b631d5494b828675c2c188a250b4a.rrd b3e629bbb8f463e2a0517d524ec1ab8.rrd 4ab11a1f12889a36cf6fe49dbce7ec14.rrd  
397126166433d352137210e06a4d991.rrd b5fdb05f6073af05be33f09d60361dbb.rrd 4f4f12cd137c1e9c6192706edfaf8870.rrd  
39c87959bff2897e95bbdc2534244604.rrd b6fab762e5b0158b721608d3e60abda.rrd 513bb20623950157d1b7c3808601147.rrd  
3b6a659cb86b123f27aaa2cb021aab88.rrd b7539c0cc732eb9f6e2647ee99a3b51a.rrd 4fa8fb45f2f31e6ddb87623076cb99a.rrd  
4ab11a1f12889a36cf6fe49dbce7ec14.rrd beacee77b073b782fa4684eb92d3a370.rrd 5553d839ab4bac8a0d77b8ffbf6db6d.rrd  
4f4f12cd137c1e9c6192706edfaf8870.rrd c0f334e27ce9c505180fe6f8160d2b96.rrd 5634aba1801e962c0bf346896f1606ef.rrd  
513bb2062395057d1b74c3808601147.rrd c2776114844ac121cffd56eb085f1213.rrd 5655e8f955149d056b4239c2867afb89.rrd  
54fa8fb45f2f31e6ddb87623076cb99a.rrd c3a32b1cbd8e9594cdcca92fef316697.rrd 586fc19454c06a3e0d735fdf5f601b6d.rrd  
5553d839ab4bac8a0d77b8ffbf6db6d.rrd c5ec8f68f57357b8a01f228282ff11ce.rrd 592dccd5250069c3f9e50565e1e2d63f.rrd  
5634aba1801e962c0bf346896f1606ef.rrd cb40d13ca1e1b9d6041bc6650bfd68a9.rrd 63ba03d97619720a0e188ebc277d256.rrd  
5655e8f955149d056b4239c2867afb89.rrd cbb769609c6b36496f1881311384c31b.rrd ad3ee5c70b343c3edfb805bf919e97a0.rrd  
586fc19454c06a3e0d735fdf5f601b6d.rrd d010b96643ef83f18034a2f1fc948093.rrd b3e629bbb8f4637ea0517d524ec1ab8.rrd  
592dccd5250069c3f9e50565e1e2d63f.rrd d1a0ac95ada4bb61b3f9cc75d28cb6aa.rrd b5fdb05f6073af05be33f09d60361dbb.rrd  
63ba03d97619720a0e188ebc277d256.rrd d5d9ca6702ae3e48abd0bb575e5cfec.rrd b6fab762e5b0158b721608d3e60abda.rrd  
672fe70e8bf100933ea430a89f9daf29.rrd d631a6abd1a57e334a9b804223fd3cf2.rrd b7539c0cc732eb9f6e2647ee99a3b51a.rrd  
674d93cd7a1111ccfd79f9db39d961f3.rrd d7e8cdf61d9dacb408cd751aa717859.rrd beacee77b073b782fa4684eb92d3a370.rrd  
69ebeaa84aea256f6e9d66c4eb9d3122.rrd dc1ad2de1af000976275798820d78ed.rrd c0f334e27ce9c505180fe6f8160d2b96.rrd  
6a8b438ebc9bcb78444a4e21efd67062.rrd c2776114844ac121cffd56eb085f1213.rrd

# Thousands of databases

**Limited zoom for older data**



# No Realtime Charts

*Everything is delayed and you have to hit refresh repeatedly*

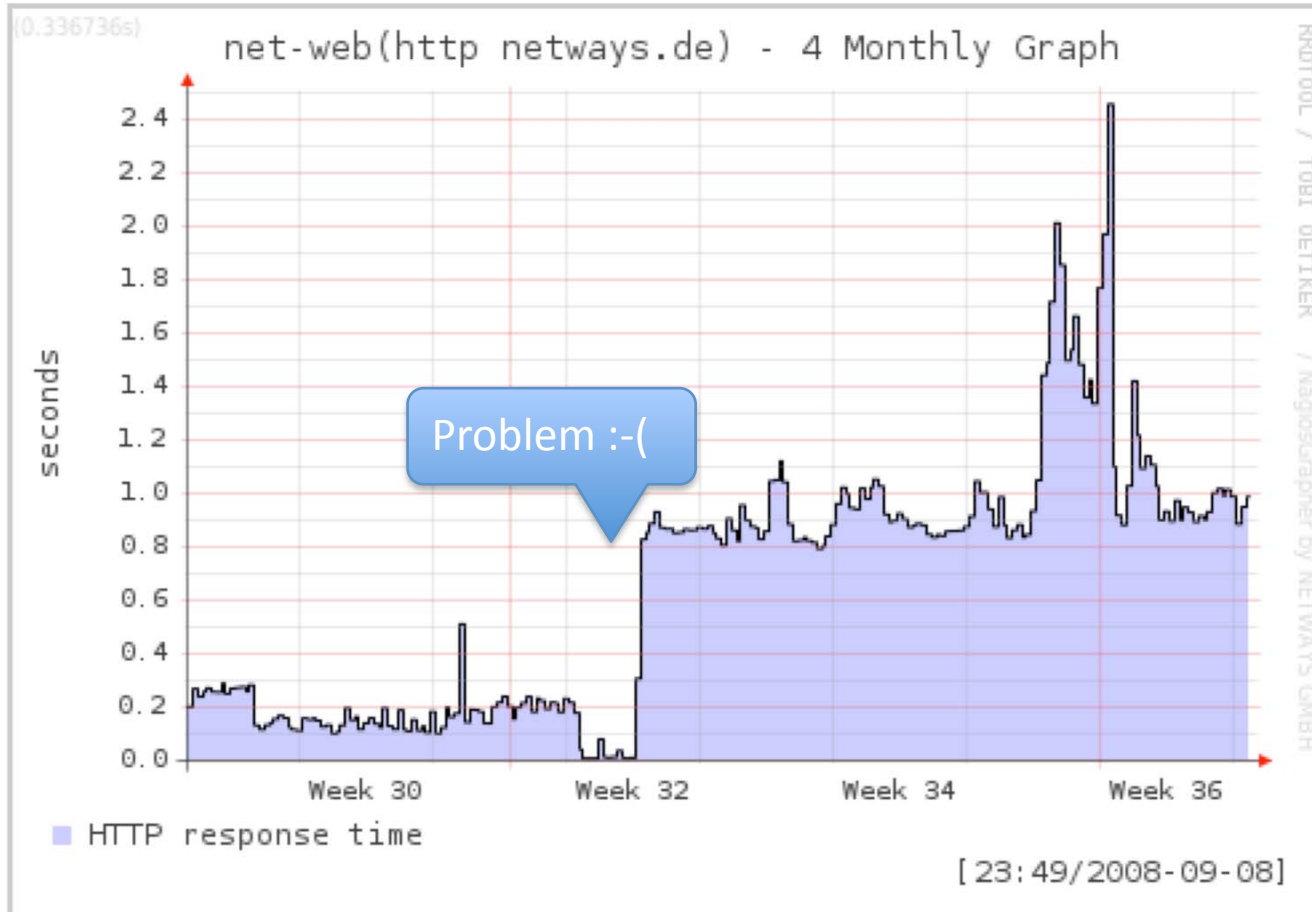




**You can always see  
only one chart at a time**

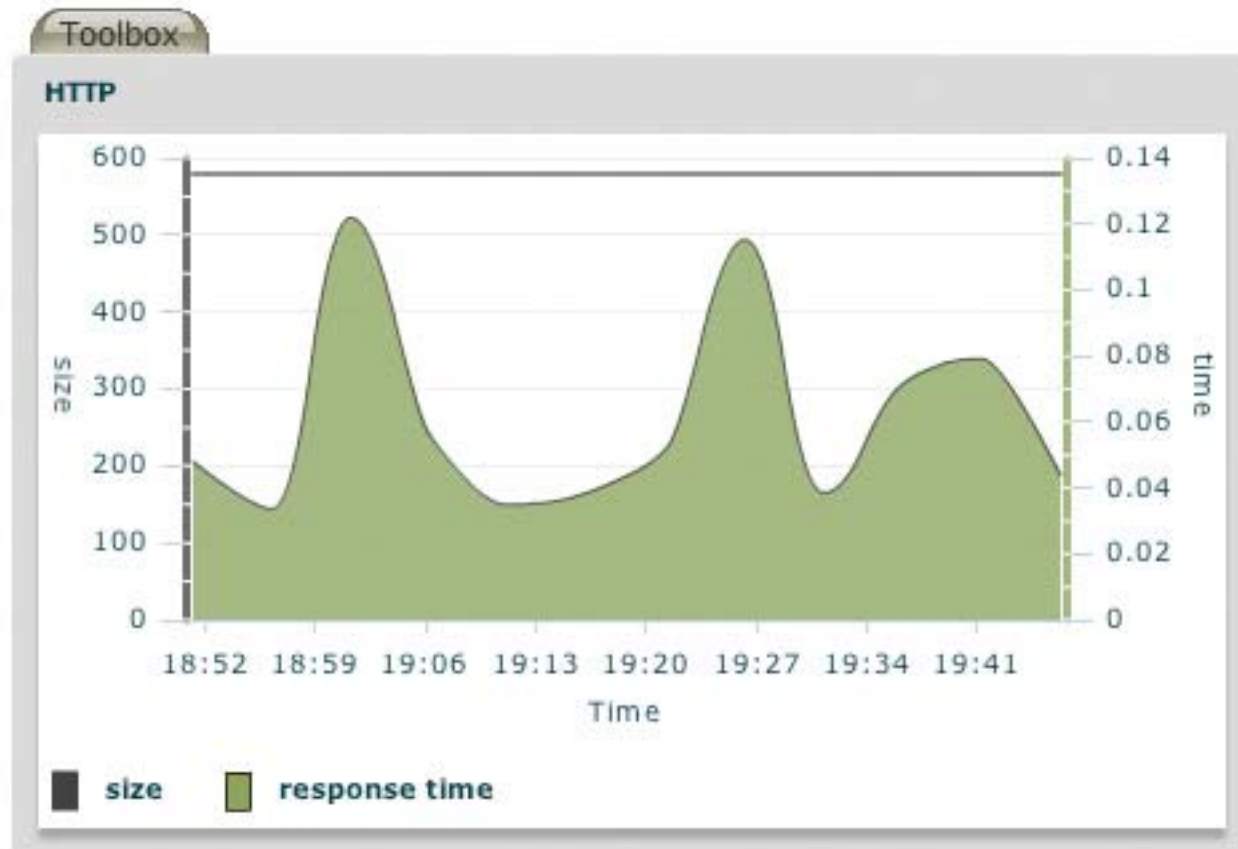


NETWAYS   
**GRAPHER**

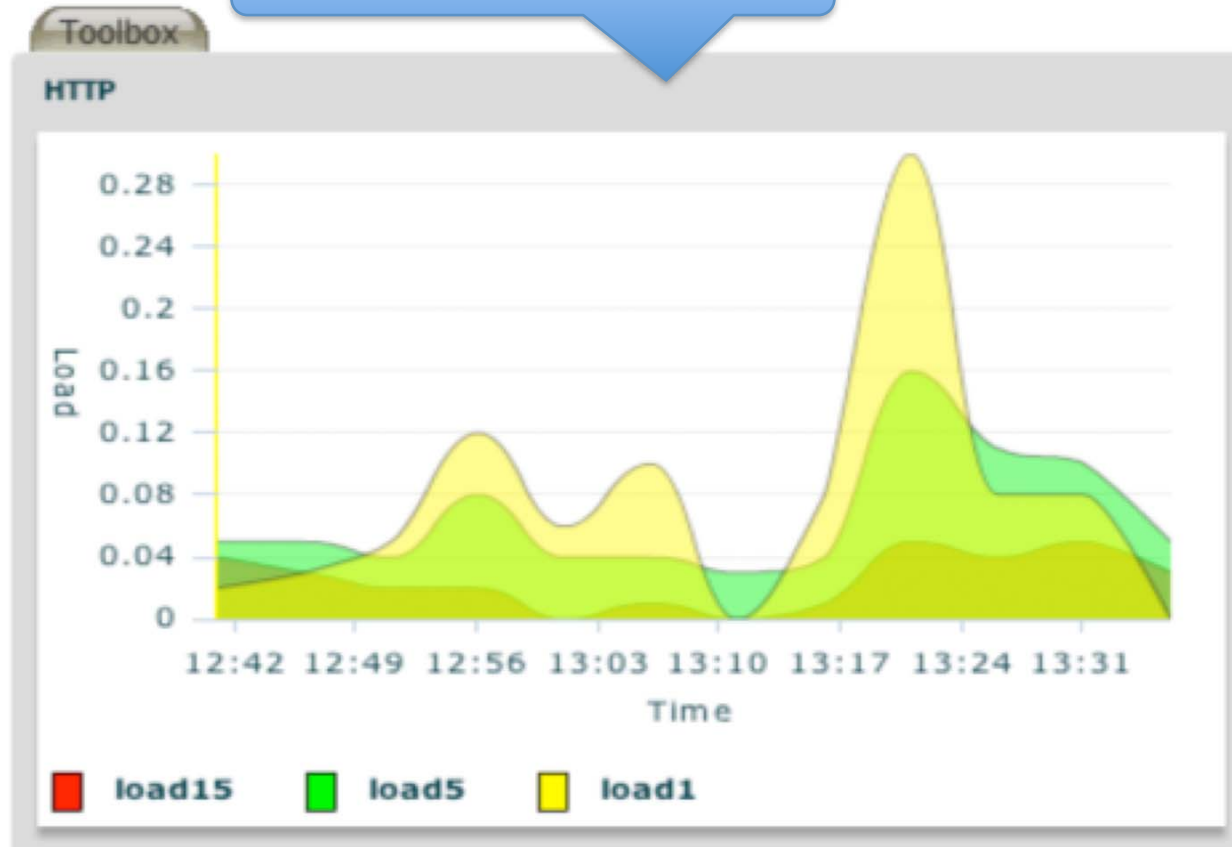


**Graphs just don't look nice**  
and often display problems (just kidding)

# Nice Flash based charts



Even the problem is gone :-)



**Multiple values look good too**



**End users can't**  
configure anything

# Users can configure

Dashboards

Parser

Charts

Multigraphs

Templates

## in the browser

and share them with others



**Very  
limited  
data  
input  
options**

# Connects to everything

and is really easy to extend

**Input Channels:** File, Pipe, Network Socket

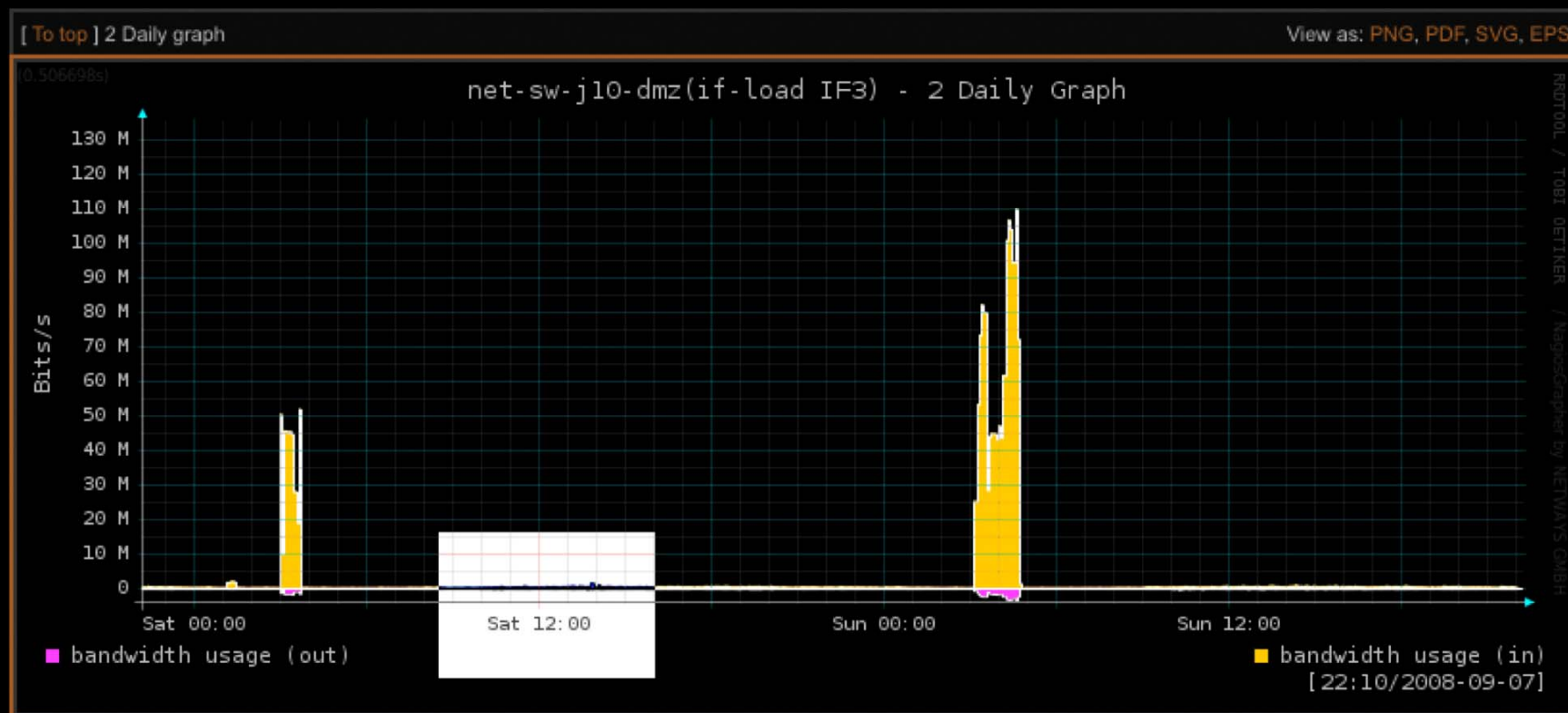
**Parsers:**  
CheckMulti,  
PerfData,  
PluginOutput  
Templated  
Regex



**Manipulations:**  
Rewrite,  
Calculations

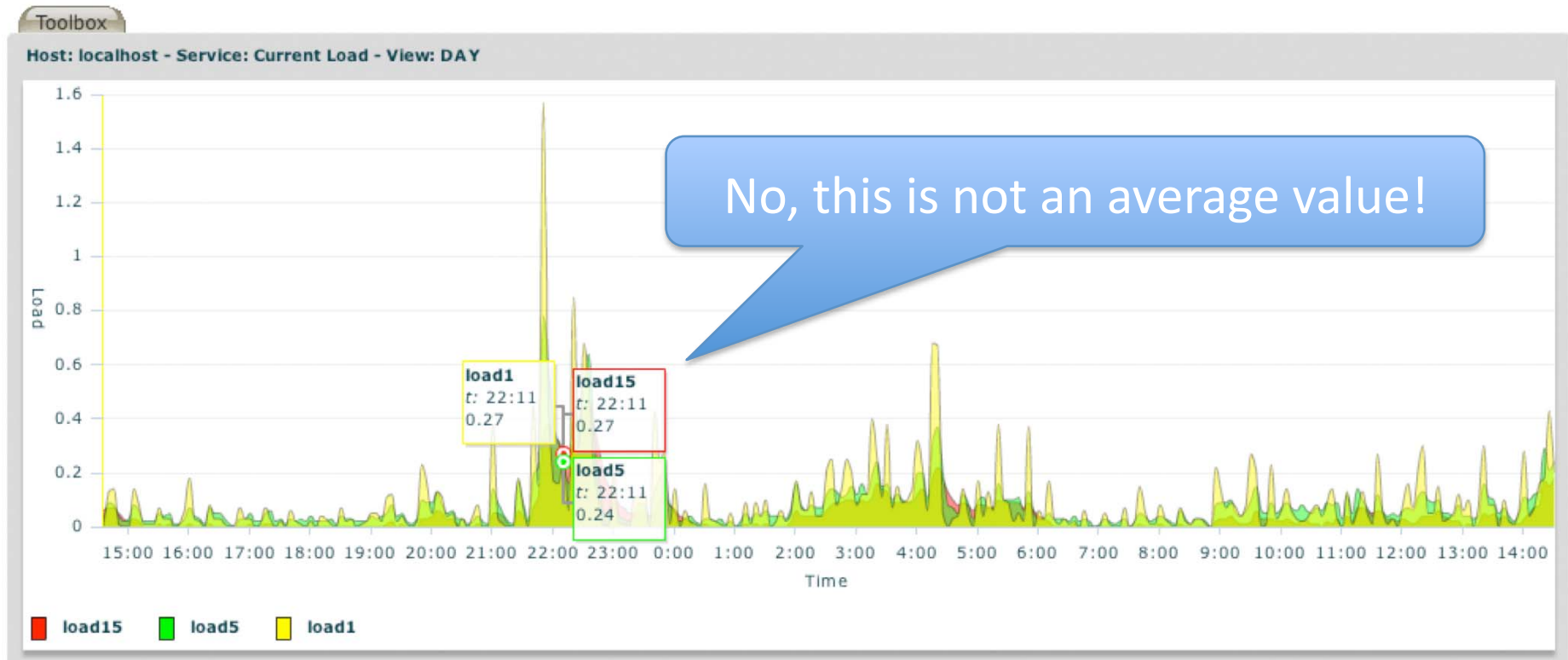
**Databases:** MySQL, RRDTool or any other Database

# Can't get actual figures



Manager: „Can you get me the bandwidth from Saturday around 12?“

# Get all values right





# **You need a crystal ball**

to figure out which charts you might need in the future



**No  
Checkresult  
is left  
behind**

00e4e94ceb76755aad6e7c63d4f6cf6d.rrd 7e23a21394c69a3201b08f039a4c2855.rrd e26d0d15662aec8b25dde34ce547d6e.rrd  
02d63875c1d1520e47e0079b5f45299.rrd 7f15548c84293f31154e1ab3852d833b.rrd e31976999c88c7c0f030282233538ac3.rrd  
04ede9c4b9fed0bdba78977a0c3f9000.rrd 7f2c485900f18e6f9bc6e751dcca2ee.rrd e6f8981c300ce4557659025ddee8644c.rrd  
052b17d01633d7ce509b9cf6ca90a028.rrd 825a62bdd35cae954ea743e531b5279.rrd e85e0634e0c83fe87da2cd2a4d4ef74c.rrd  
08b7b82013342a607e19187cf6a9f8f8.rrd 8519289e9f41f52505df7e2f4939ea94.rrd f7c6169e0db7d57ddac9fe08453169f6.rrd  
0e69b6bcc6d1bfac143a55bd581ce4d8.rrd 8db5b4cf571c9bc42ab8e17fd56bc60d.rrd fb6d0779ba6a6eb5b1d22fd1924c9210.rrd  
0fc902627f4d6d8bd6c4fa9f54b8cd33.rrd 914e847f0422e151f3f5bbff141f1e93.rrd 1b398fa87e052ccb34216b37c76762f3.rrd  
1001fa28f1e1d9f0aa57e5e5f982418d.rrd 915d66322c67015603e05773301b730.rrd 20a8a693d469a3d0bdfa6f21cd2ef16a.rrd  
1290e37f0f04b446b9800149c54095c2.rrd 991dfde58d3713def7be3fe2965942e8.rrd 23373445e9e18d493435cb66ecea49d.rrd  
14bb2716a6f16ddd1f70df746dc5305a.rrd 9d1f5f9aca3fe223f0ad85ca0efb933d.rrd 254795ab008d1c4710b5547e161086b.rrd  
1b398fa87e052ccb34216b37c76762f3.rrd a0716886e4262710a6c495163ff07b1a.rrd 26bfdd429ba27f3de59a8ca6aa8bfd13.rrd  
20a8a693d469a3d0bdfa6f21cd2ef16a.rrd a141937e8d6b9d1179803371330c8ffd.rrd 2c7d5043a84c0fba950b04d4fb6621b4.rrd  
2373445e9e18d493435cb66ecea49d.rrd a40dd23b62446e80185e02d09c7b18c.rrd 35b631d5494b828675c2c188a20b4a.rrd  
25495ab008d1c4710b5547e161086b.rrd ab1dc56e779bd11d17133b4225.rrd 397126166433d352137210e06a4d991.rrd  
26bfdd429ba27f3de59a8ca6aa8bfd13.rrd ad3ee5c70b343c3edfb805bf919e97a0.rrd 3c8759b9f297e95bbdc2534244604.rrd  
2c7d5043a84c0fba950b04d4fb6621b4.rrd ad3ee5c70b343c3edfb805bf919e97a0.rrd 3b6a659cb86b123f27aaa2cb021aab88.rrd  
35b631d5494b828675c2c188a250b4a.rrd b3e629bbb8f463e2a0517d524ec1ab8.rrd 4ab11a1f12889a36cf6fe49dbce7ec14.rrd  
397126166433d352137210e06a4d991.rrd b5fdb05f6073af05be33f09d60361dbb.rrd 4f4f12cd137c1e9c6192706edfaf8870.rrd  
39c87959bff2897e95bbdc2534244604.rrd b6fab762e5b0158b721608d3e60abda.rrd 513bb20623950157d1b7c3808601147.rrd  
3b6a659cb86b123f27aaa2cb021aab88.rrd b7539c0cc732eb9f6e2647ee99a3b51a.rrd 4fa8fb45f2f31e6ddb87623076cb99a.rrd  
4ab11a1f12889a36cf6fe49dbce7ec14.rrd beacee77b073b782fa4684eb92d3a370.rrd 5553d839ab4bac8a0d77b8ffbf6db6d.rrd  
4f4f12cd137c1e9c6192706edfaf8870.rrd c0f334e27ce9c505180fe6f8160d2b96.rrd 5634aba1801e962c0bf346896f1606ef.rrd  
513bb2062395057d1b74c3808601147.rrd c2776114844ac121cffd56eb085f1213.rrd 5655e8f955149d056b4239c2867afb89.rrd  
54fa8fb45f2f31e6ddb87623076cb99a.rrd c3a32b1cbd8e9594cdcca92fef316697.rrd 586fc19454c06a3e0d735fdf5f601b6d.rrd  
5553d839ab4bac8a0d77b8ffbf6db6d.rrd c5ec8f68f57357b8a01f228282ff11ce.rrd 592dccd5250069c3f9e50565e1e2d63f.rrd  
5634aba1801e962c0bf346896f1606ef.rrd cb40d13ca1e1b9d6041bc6650bfd68a9.rrd 63ba03d97619720a0e188ebc277d256.rrd  
5655e8f955149d056b4239c2867afb89.rrd cbb769609c6b36496f1881311384c31b.rrd ad3ee5c70b343c3edfb805bf919e97a0.rrd  
586fc19454c06a3e0d735fdf5f601b6d.rrd d010b96643ef83f18034a2f1fc948093.rrd b3e629bbb8f4637ea0517d524ec1ab8.rrd  
592dccd5250069c3f9e50565e1e2d63f.rrd d1a0ac95ada4bb61b3f9cc75d28cb6aa.rrd b5fdb05f6073af05be33f09d60361dbb.rrd  
63ba03d97619720a0e188ebc277d256.rrd d5d9ca6702ae3e48abd0bb575e5cfec.rrd b6fab762e5b0158b721608d3e60abda.rrd  
672fe70e8bf100933ea430a89f9daf29.rrd d631a6abd1a57e334a9b804223fd3cf2.rrd b7539c0cc732eb9f6e2647ee99a3b51a.rrd  
674d93cd7a1111ccfd79f9db39d961f3.rrd d7e8cdf61d9dacb408cd751aa717859.rrd beacee77b073b782fa4684eb92d3a370.rrd  
69ebeaa84aea256f6e9d66c4eb9d3122.rrd dc1ad2de1af000976275798820d78ed.rrd c0f334e27ce9c505180fe6f8160d2b96.rrd  
6a8b438ebc9bcb78444a4e21efd67062.rrd c2776114844ac121cffd56eb085f1213.rrd

# Thousands of databases



One single  
MySQL Database  
stores everything

**Limited zoom for older data**



No values will be deleted\*

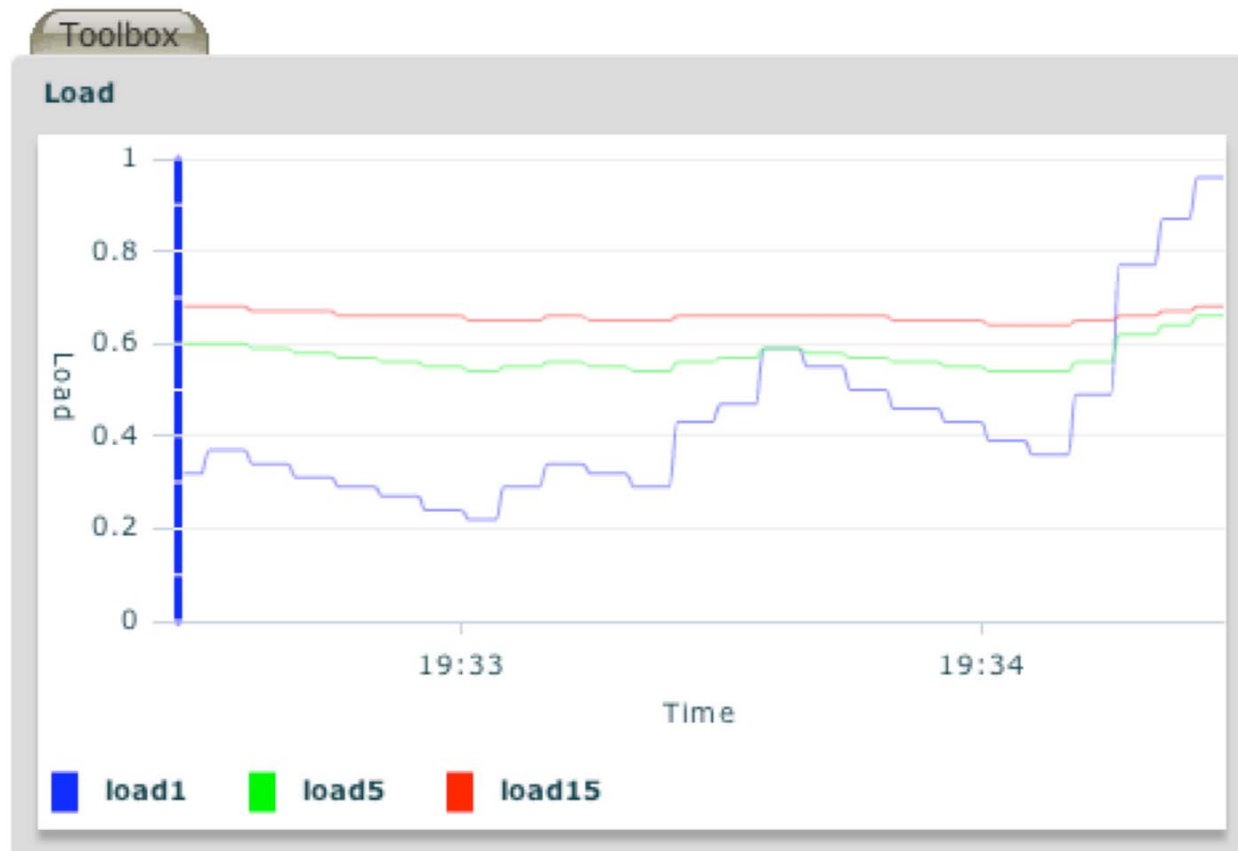
\*Unless you explicitly say so

# No Realtime Charts

*Everything is delayed and you have to hit refresh repeatedly*



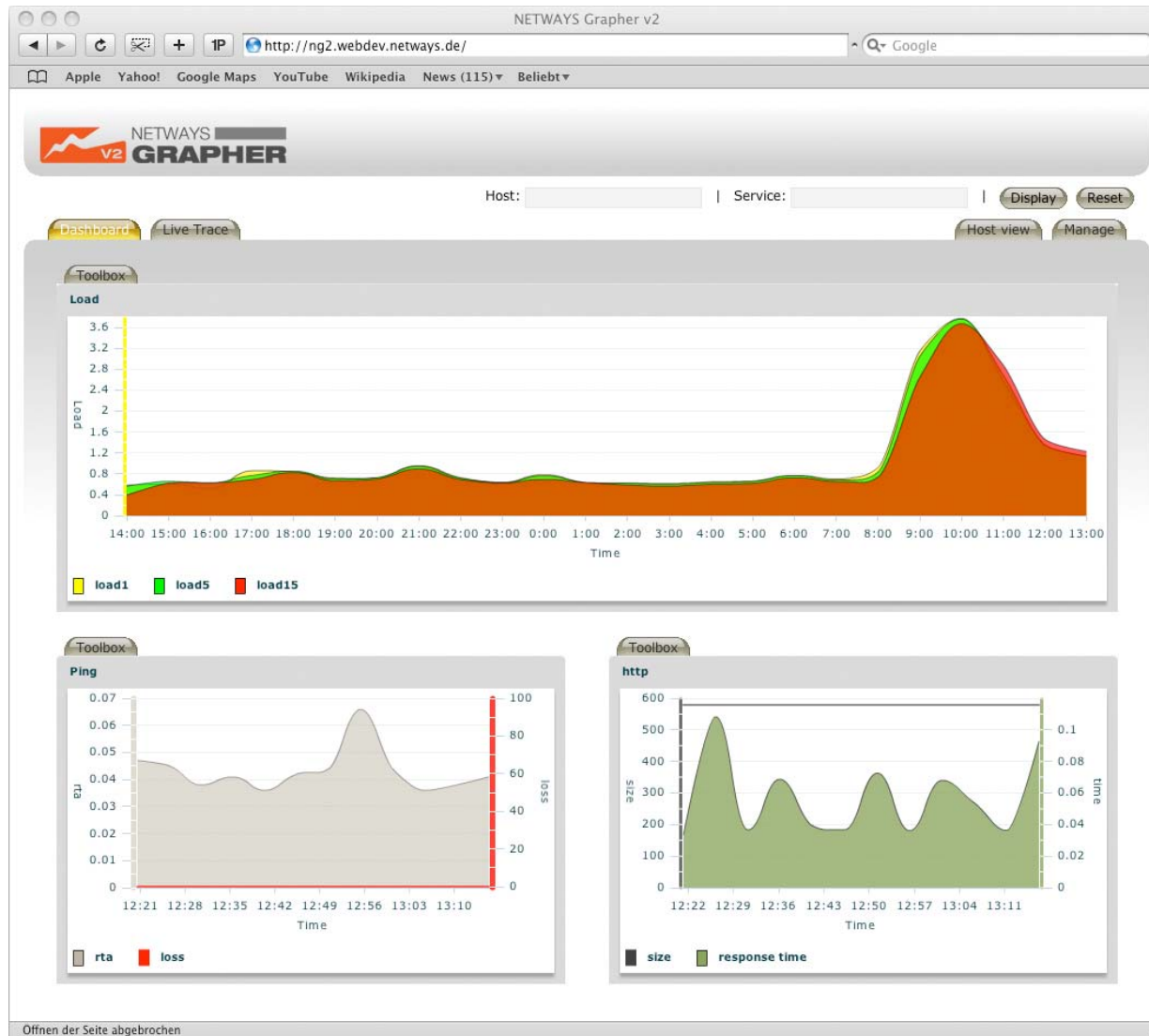
# Realtime Charts



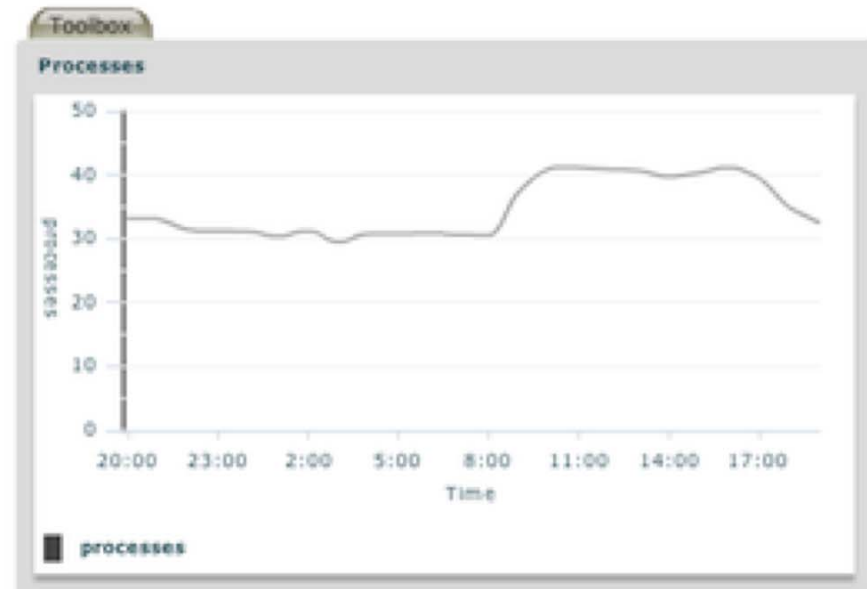


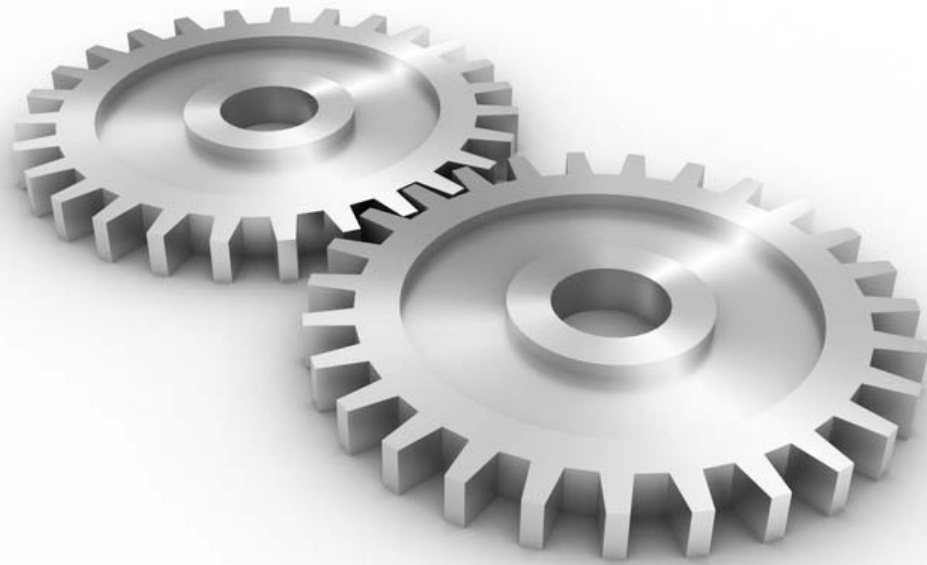
**You can always see  
only one chart at a time**

# Create you own dashboards



# Dynamic Multigraphs





**More features**  
and architecture

# Built in housekeeping



Internal watchdog and housekeeping

manages  
aggregates  
consolidates  
purges  
checks



Performance Data

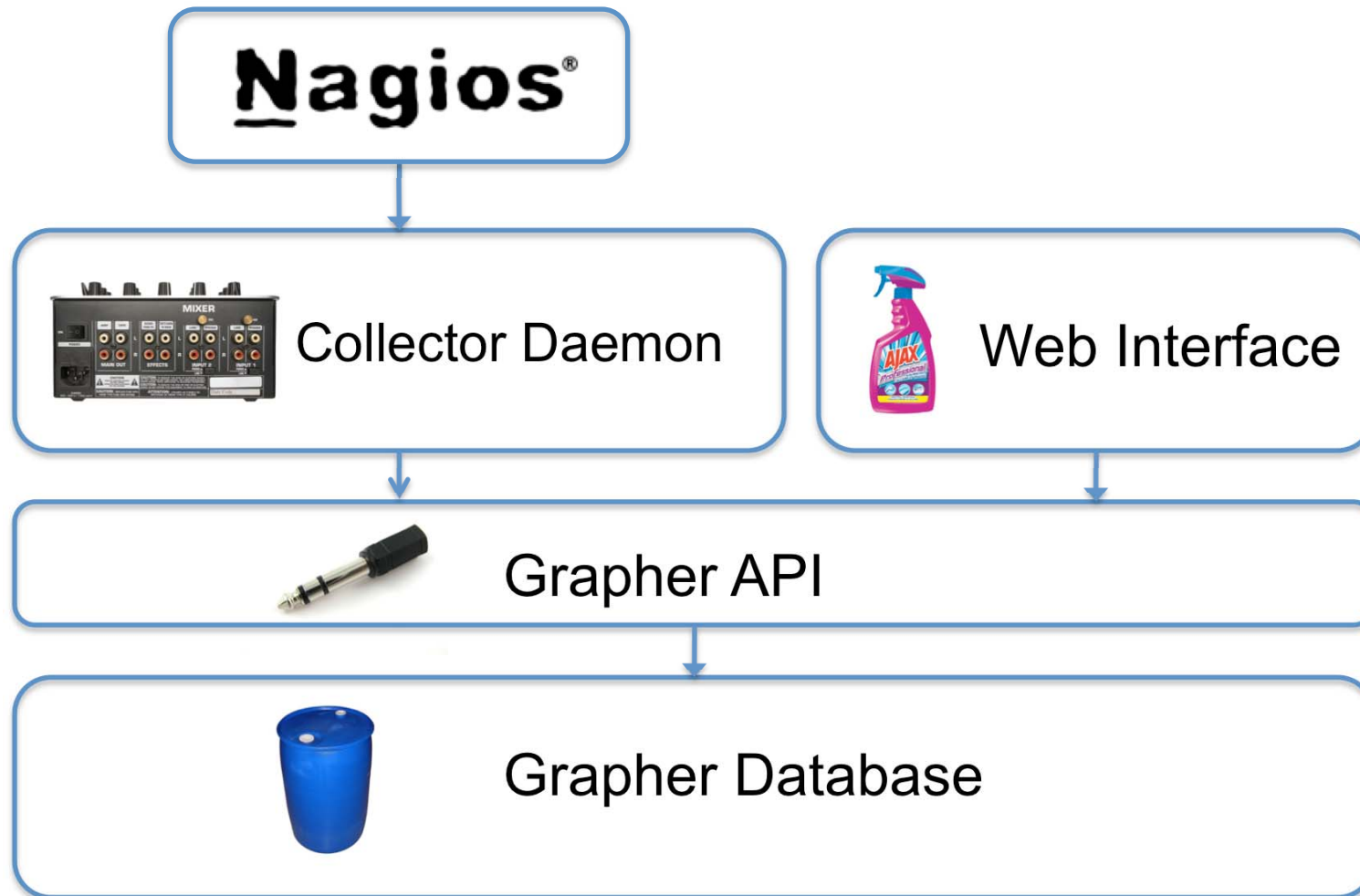
and is easy to adjust to your needs

# Ajax'ed Webinterface

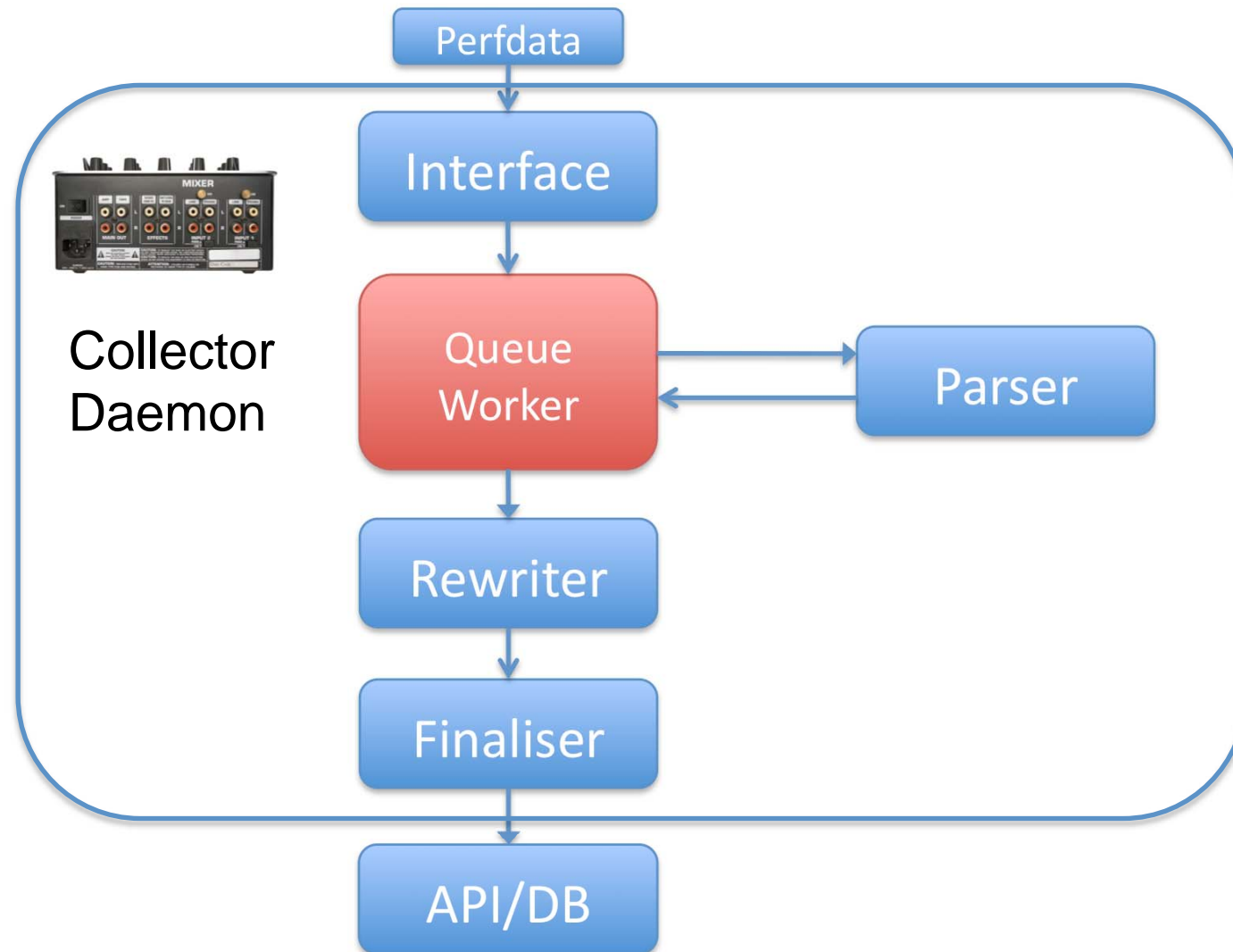
- Refresh without reload
- Dynamic Host and Service Lookup
- Customizable through Themes
- Multilanguage Support
- Simple Configuration
- Easy Nagios Integration
- Works even without Nagios



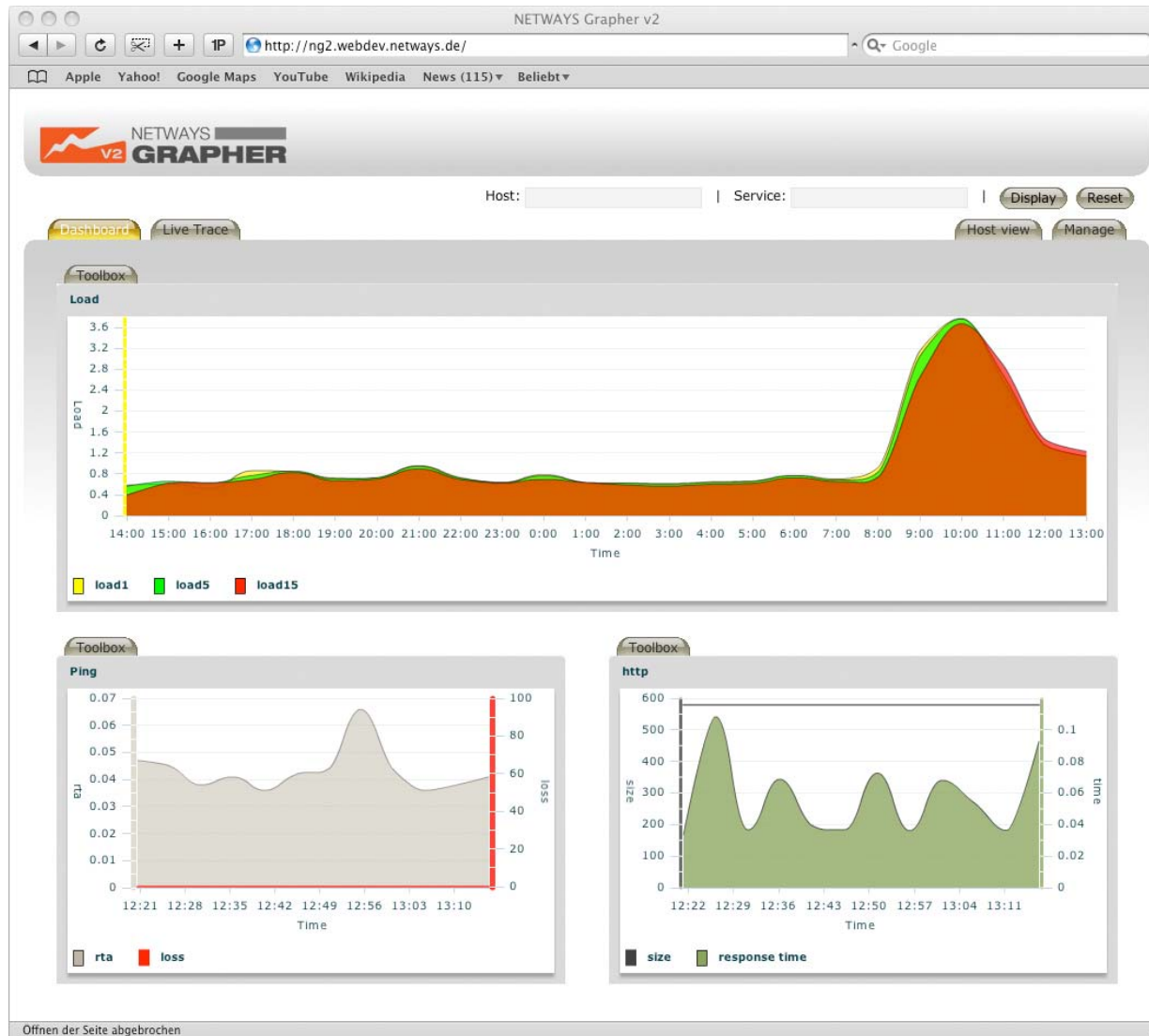
# Architecture



# Collector Daemon Internals



# Status



# Final Thoughts

Download it from [www.nagiosforge.org](http://www.nagiosforge.org)

Use it & Provide Feedback

